

SOMMARIOCONTENTS

217 Febbraio/February 2009



editorialeeditorial

- 13** L'uomo artigiano
The Craftsman Aldo Colonetti

ottagonale

- 18** Frammenti da una città crisalide
Fragments of a chrysalis city Elena Franzoia

design

- 26** Souvenir dal Libano
Souvenirs from Lebanon Elisa Massoni
- 32** Atelier Ruanda: in rotta verso l'africa
Atelier Rwanda: journeying to Africa Gaddo Morpurgo

reportage

- 40** Racconti dal mondo
Tales from around the world Valentina Croci

58 Tessere di geografie progettuali

Fragments of design geographies V. C.

in primo pianospotlight on

- 64** Cityfutures: gli strumenti per la transizione
Cityfutures: tools for transition Clara Mantica, Giuliana Zoppis - Best Up

ABITARELIVING

interniinteriors

- 84** Speculari affinità elettive in bianco e nero
Elective reflective affinities in black and white Elena Vai

- 94** Sfida alla perfezione
Challenging perfection E. V.

prodottiproducts

- 100** Il bagno, ricerca senza confine
Bathrooms, no limits on research Erica Marson

technoliving

- 116** Click & touch attivati dal design
Click & touch activated by design Silvia Airoidi

doors & windows

- 120** Porte aperte sugli interni
Opening the door on interiors S. A.

- 126** Profili eccellenti
Windows on excellence S. A.

ARCHITETTURA

focus on

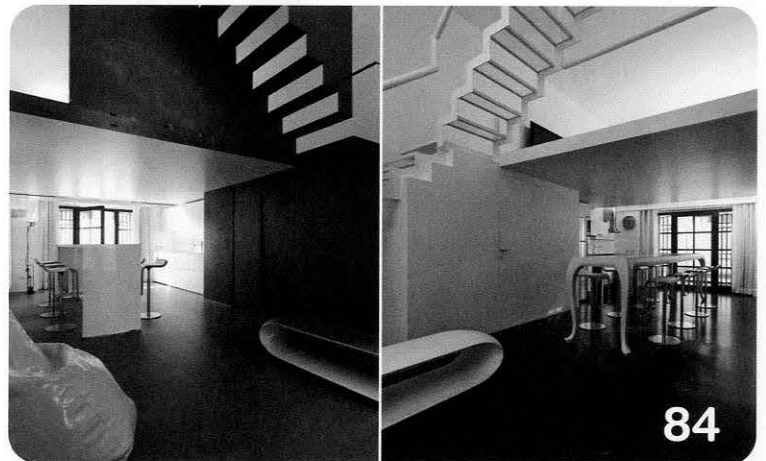
- 132** Passaporto di pace
A passport to peace Elena Franzoia

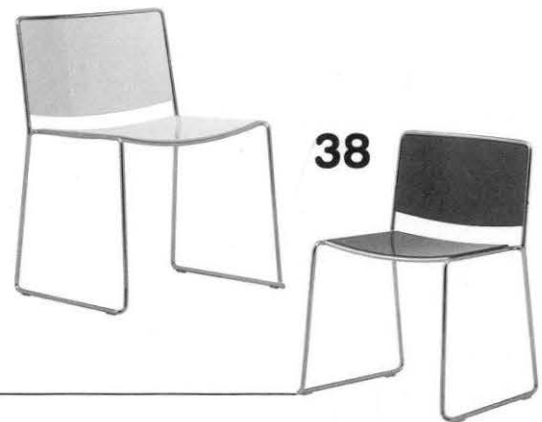
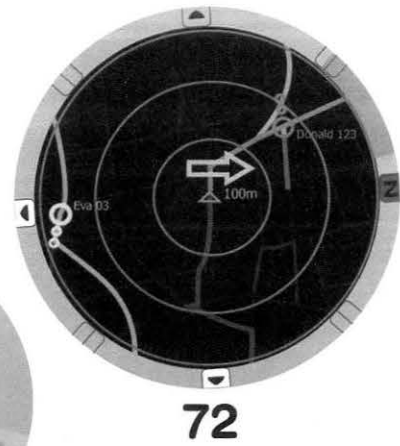
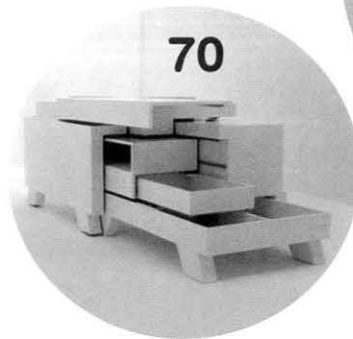
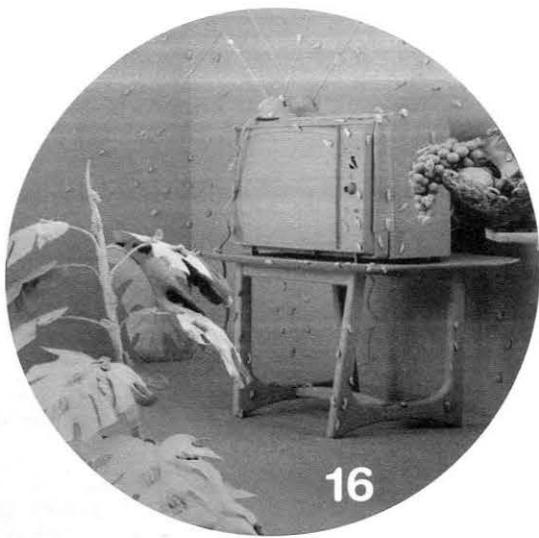
portrait

- 140** The less, the better Alessandra Bergamini

progettiprojects

- 146** A stretto contatto con la natura
Close to nature Elisa Montalti





RUBRICHEREGULARS

- | | |
|------------------------|-------------------------------|
| 4 flash | 152 architecture flash |
| 14 letters | 154-156 landscape |
| 16 trendwatchers | 158 city |
| 36 exempla | 160 architecture competitions |
| 38 blueprint | 164 fair diary |
| 60 motors&more | 166 fairs |
| 62 lighting design | 168 report on fairs |
| 70 meteo design | 169 insights |
| 72 design competitions | 170 stand up |
| 76 exhibitions | 176 addresses |
| 78 location | 177 bookshop |
| 80 books | |
| 82 event diary | |
| 130 showroom shot | |

COMPANY PROMO

- 172 Desalto

copertinacover



Yellow Treehouse Restaurant, Auckland NZ
design by Pacific Environments Architects, photo
©Peter Eising and Lucy Gauntlett.

Febbraio si illumina al buio. Segui le tracce
di Ottagono anche al buio con la copertina
luminescente/February lights up the dark.
Follow the path of Ottagono even in the dark
with the luminescent cover